

## HD Internal Max Contact Pulling Tool

The HD Internal Max Contact Pulling Tool engages into bespoke and industry-standard internal GS fishing necks and comes in a range of sizes from 1-1/4" – 7" for use within 2 3/8" tubing up to 9 5/8" casing.

### DESCRIPTION

Its robust design and heavy-duty core combined with latch finger full circumference contact offers a significant increase in strength over conventional industry pulling tools and eliminates potential damage often observed on standard pulling tool components or the fish neck of the tool being retrieved.

- Increased fish neck contact
- Interchangeable components for reduced stock
- No special tools are required for disassembly or assembly

### FEATURES

- High tensile/yield design
- Latch finger or slip arrangement
- Full range of sizes available
- Field redressable
- Supplied with Double Jar Down Adaptor as standard
- Provided with any industry connection
- Sale and rental options are available

*Continued over page →*

### GET IN TOUCH

+44 (0) 1224 502200 | [info@wellvene.com](mailto:info@wellvene.com)

Technology House, Pitmedden Road, Dyce, Aberdeen AB21 0DP

[wellvene.com](http://wellvene.com)

# HD Internal Max Contact Pulling Tool



## CONFIGURATIONS

Where the fish neck proves problematic to latch due to damage or scale build-up, the IMCPT latch finger can be replaced with a **slip assembly** to further increase the likelihood of latching and retrieval.

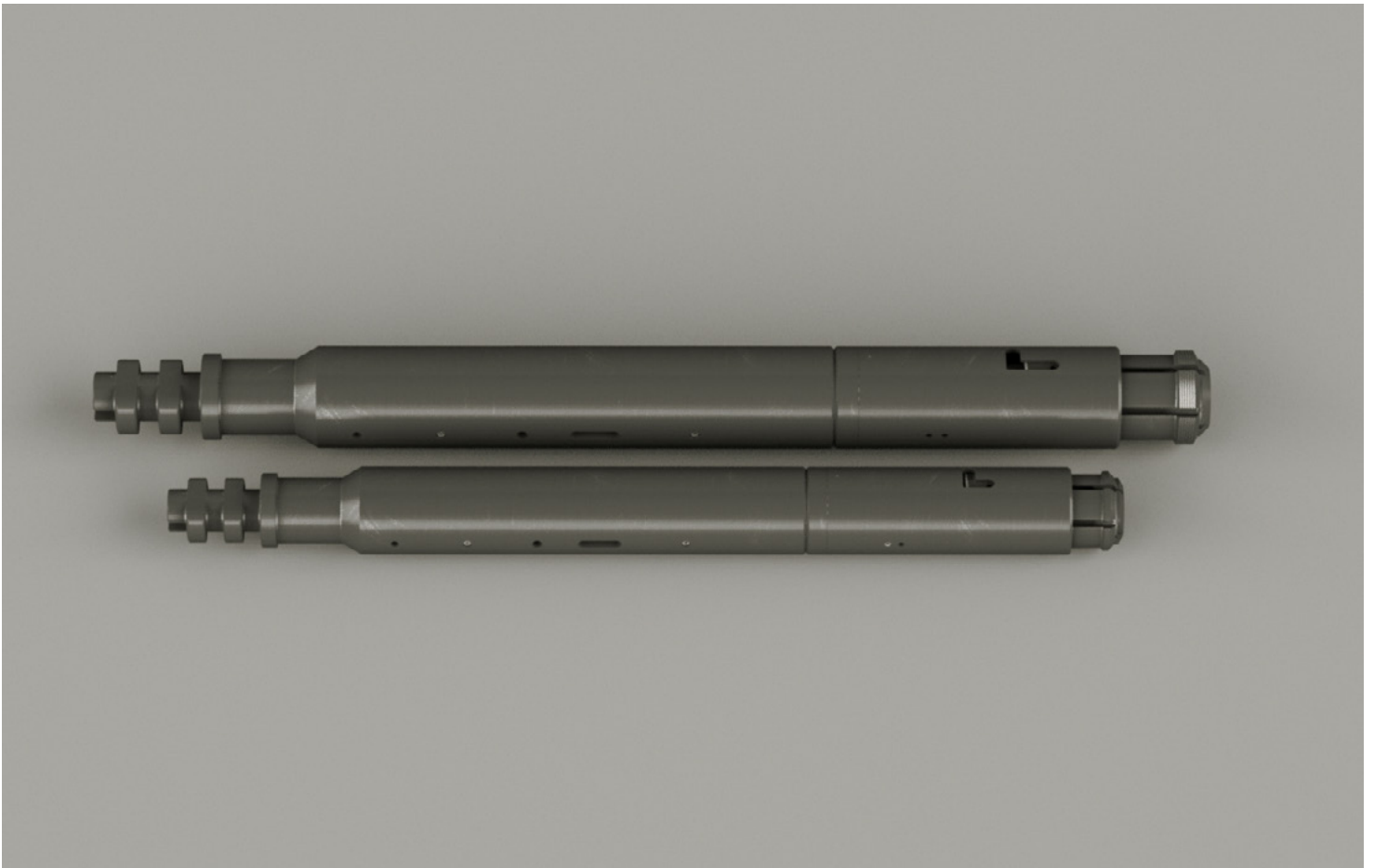
The tool is supplied with a **Double Jar Down Adaptor (DJDA)** as standard, which eliminates the potential for premature shearing of the tool during prolonged or severe downward jarring when latching into a fish neck.

Subsequent upward jarring can also be applied indefinitely or until the tool being retrieved is released. This upward action shears the shear

pin in the DJDA mechanism to allow the tool to transfer into the pre-release position. Further downward jarring will then shear the release pin, allowing for retrieval of the IMCPT from the fishing neck.

Where applying upward jarring is not operationally required, the IMCPT can also be configured with a Standard Jar Down Adaptor (SJDA), which ensures the IMCPT can latch and then release from the fish neck with downward jarring only.

Job-specific threaded cores can also be supplied to suit operations where equalising prongs and running/pulling probes are required.



## GET IN TOUCH

+44 (0) 1224 502200 | [info@wellvene.com](mailto:info@wellvene.com)

Technology House, Pitmedden Road, Dyce, Aberdeen AB21 0DP

[wellvene.com](http://wellvene.com)