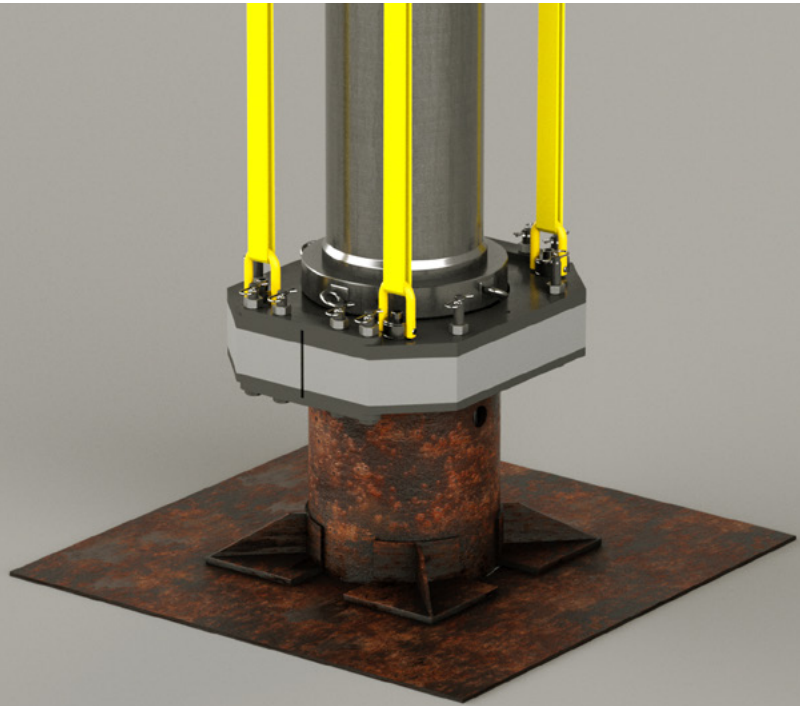


Conductor and Casing Clamps



With the increasing volume of P&A operations, the installation of heavyweight drilling and intervention equipment is applying additional loads to casing strings and wellheads.

DESCRIPTION

Designed specific to the required application. Our range of conductor clamps are designed to distribute the load and provide support to minimise buckling on aging wells caused by thermal expansion/contraction.

FEATURES

- Designed specific to required wellhead assembly
- All clamps supplied with a detailed side and axial load stress analysis report
- Can also include a casing centralisation feature

GET IN TOUCH

+44 (0) 1224 502200 | info@wellvene.com
Technology House, Pitmedden Road, Dyce, Aberdeen AB21 0DP